



OPEN HOUSE

Community members are invited and encouraged to attend, learn more, and provide feedback.

**Comprehensive
Downtown Dover Parking
Solution**

Wednesday, August 11

4:30—6:30 p.m.

Community Room of the Library

[Tinyurl.com/DoverParkingSolutions](https://tinyurl.com/DoverParkingSolutions)





Downtown Dover Parking

DDP Parking Committee Meeting

August 11, 2021

A background image of a downtown street scene with buildings, parked cars, and a street sign. The text "Downtown Dover Parking Management Plan" is overlaid on this image in a large, bold, blue font.

Downtown Dover Parking Management Plan

Table of Contents

1. Purpose
2. Value
3. Benefits
4. Schedule
5. Survey Results
6. On-Street Parking
7. Off-Street Parking
8. Hours of Operation
9. Parking Fees
10. Parking Facility Amenities

Downtown Dover Parking Management Plan



Purpose:

The Downtown Dover Partnership (DDP) is seeking to develop cost-effective and efficient solutions to enhance parking capacity and capabilities throughout the commercial core of the City of Dover that stimulate community and economic development and improve parking services, convenience and efficiency to parking users in the downtown business area.

Downtown Dover Parking Management Plan



Value:

Even with a modest parking fee structure, revenue generated from a holistic parking solution will be reinvested into the community – by addressing projects/issues that will benefit merchants, residents and property owners. Among these issues can be meeting the future parking needs of a growing/redeveloping Downtown Dover.

Downtown Dover Parking Management Plan



Benefits:

- Create more turnover and availability for customers, visitors, and guests to Downtown Dover.
- Customer friendly system for the parking lots with monthly payment options.
- User-friendly by combining “smart” technology and cash/credit card options.
- Reasonable user cost.
- Amenities like Electrical Vehicle (EV) charging.
- More effectively use of current capacity to extend the time before a parking garage is required.

Downtown Dover Parking Management Plan



Benefits:

Parking Benefits District:

Invest proceeds from the Downtown Parking program back into improvements downtown as directed by the DDP Parking Committee for items like streetscape, lighting and safety enhancements.

Downtown Dover Parking Management Plan



Project Schedule to Date	
2008	DDP Parking Committee Formed
January 2018	Downtown Dover Parking Study Issued
April-June 2019	DDP Parking Garage RFP Issued, Proposals Evaluated and Project determined to be too costly
January 2020	DDP Issues RFI & Receives Responses for Holistic Solutions to Downtown Parking Management
June 2020	Colonial Parking, Inc. is selected to partner with DDP on Downtown Parking Management Plan
October 2020	DDP receives City of Dover authorization to include on-street parking in Downtown Parking Management Plan
November 2020	DDP & Colonial Parking launch process to start development of a comprehensive Downtown Parking Management Plan.
April 2021	DDP & Colonial Parking conduct survey and share results from over 300 respondents
June 2021	DDP & Colonial Parking continue to refine details of the Downtown Parking Management Plan.

Downtown Dover Parking Management Plan



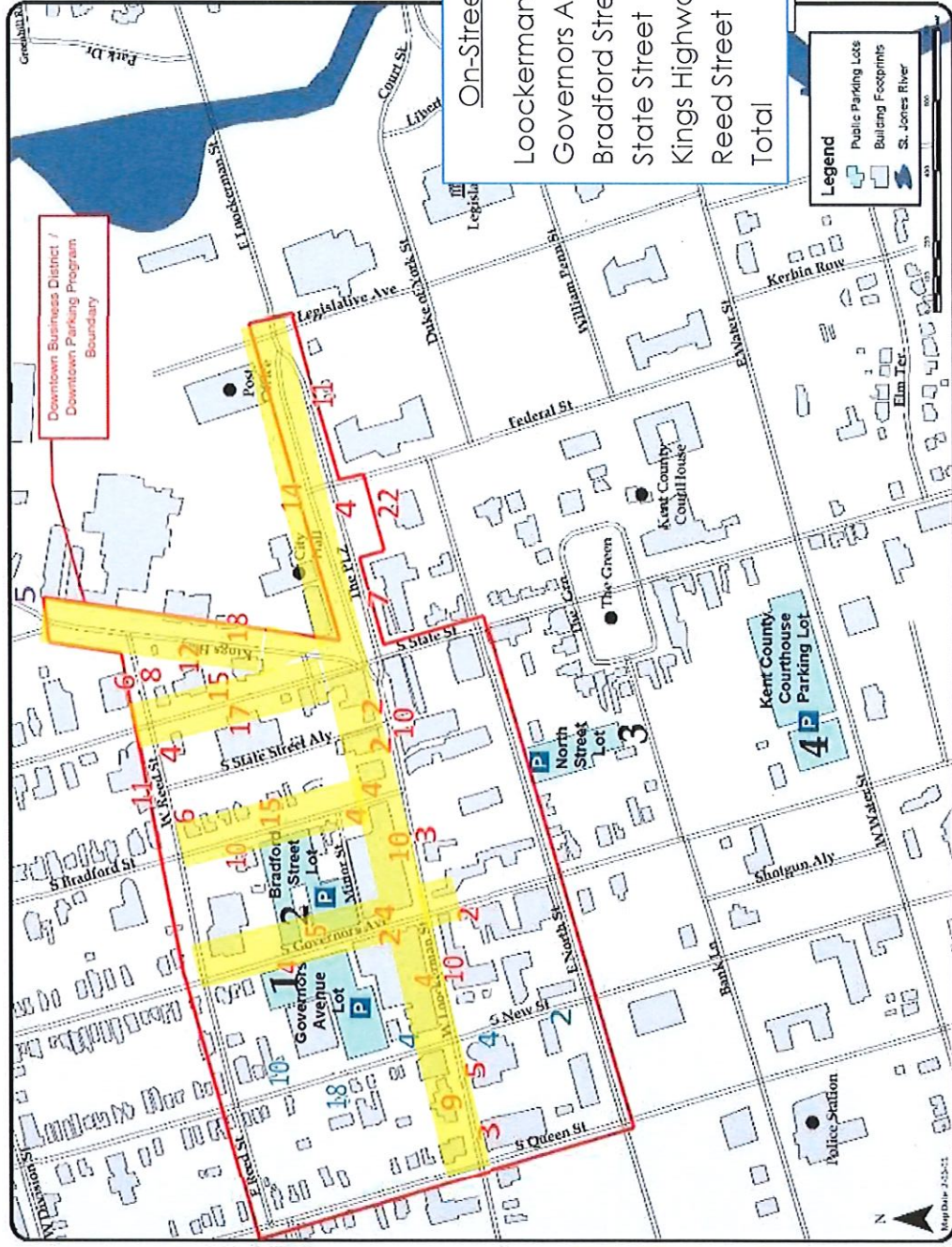
Proposed Project Schedule Moving Forward

August 11, 2021	Public Meeting	Review Parking Management Plan
August 18, 2021	DDP Parking Comm	Review Parking Management Plan
September 15, 2021	DDP Parking Comm	Review Parking Management Plan
September 21, 2021	Public Meeting	Review Parking Management Plan
September 28, 2021	Dover City Council	Present Parking Management Plan
October 20, 2021	DDP Parking Comm	Review Parking Management Implementation Plans
October 27, 2021	DDP Board of Directors	DDP Parking Comm recommendation to DDP BOD

Downtown Dover Parking Management Plan



On-Street Parking



Downtown Dover Parking Management Plan



On-Street Parking Management

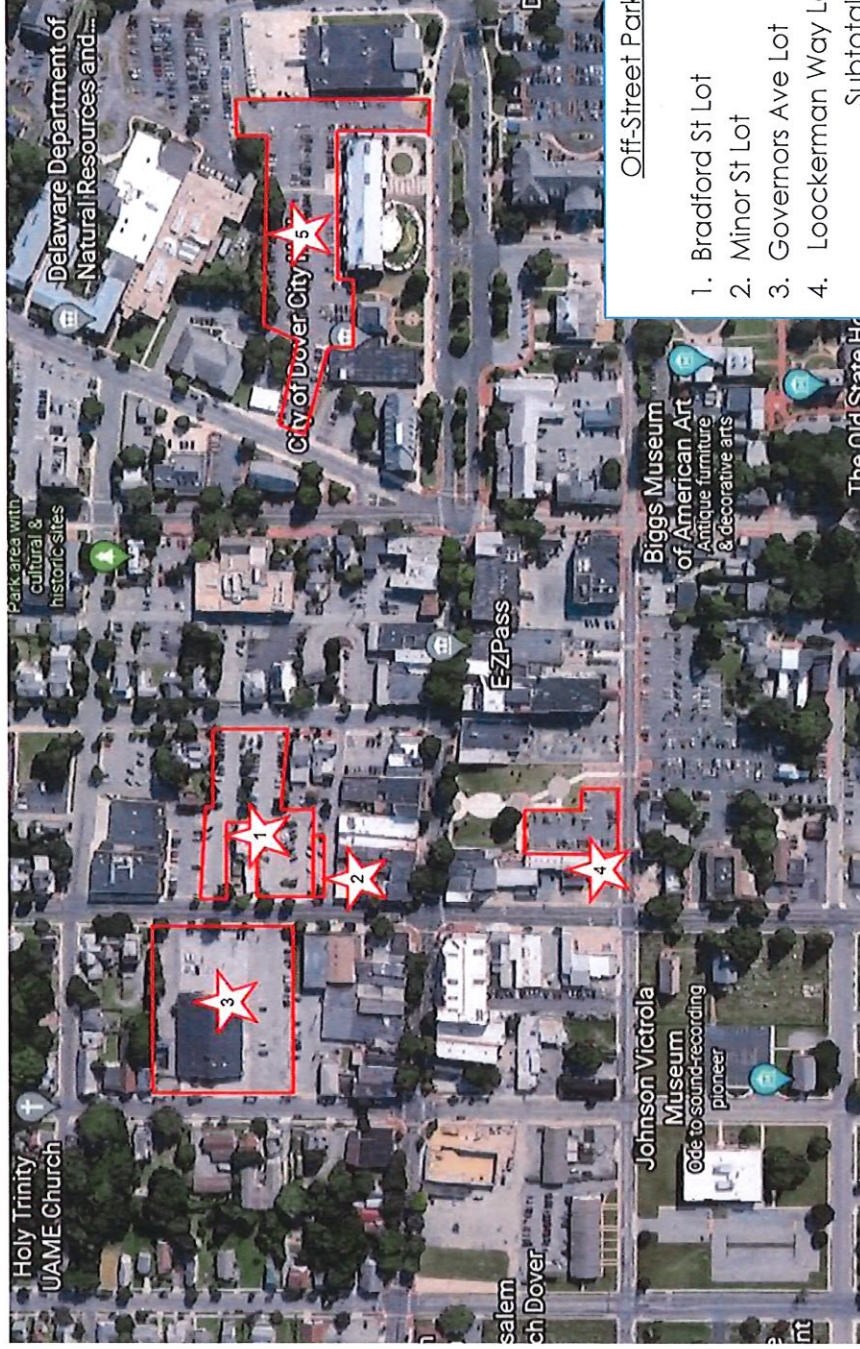
Develop the management plan including specifications for Multi-Space Meters to meet the on-street parking needs of the Downtown Dover parking program will be finalized and sent out for bid from qualified vendors with features including:

- Pay-by-Plate
- Accept Cash & Credit Card Payments
- Interface with Parking Apps for Payment
- Integrated Parking Program Enforcement Tools
- Solar Powered



Downtown Dover Parking Management Plan

Off-Street Parking



Off-Street Parking Spaces

1. Bradford St Lot	112-spaces
2. Minor St Lot	8-spaces
3. Governors Ave Lot	100-spaces
4. Lookerman Way Lot	<u>35-spaces</u>
Subtotal	255-spaces
5. City Hall/Library Lot	<u>140-spaces</u>
Total	395-spaces



Downtown Dover Parking Management Plan



Off-Street Parking Management Options

1. No Equipment
2. Multi-Space-Meter (MSM)
 - 2a. MSM with a Manual "LOT FULL" Sign
 - 2b. MSM with Loop Count System
 - 2c. MSM with License Plate Recognition (LPR) Count System
3. Full Parking Access and Revenue Control System (PARCS) including gates

Downtown Dover Parking Management Plan



Off-Street Parking Management Options

1. No Equipment

ParkMobile payment for Hourly Customers. ParkMobile would be given a maximum “inventory” of hourly spaces to sell. Once the maximum number is sold, ParkMobile would not allow additional sales until existing parking sessions expire.



Downtown Dover Parking Management Plan



Off-Street Parking Management Options

2. Multi-Space-Meter (MSM)

A MSM has the ability to limit the number of parking sessions and determine when to stop selling hourly parking, similar to ParkMobile.



Downtown Dover Parking Management Plan



Off-Street Parking Management Options

2a. MSM with a Manual “LOT FULL” Sign

An MSM has the ability to limit the number of parking sessions and determine when to stop selling hourly parking. Enforcement staff would turn a “LOT FULL” sign on and off based on physical lot counts.



Downtown Dover Parking Management Plan



Off-Street Parking Management Options

2b. MSM with Loop Count System

An MSM has the ability to limit the number of parking sessions and determine when to stop selling hourly parking. A loop count system would count the total cars in and out of the lot and trigger the “FULL” sign automatically based on total lot count.



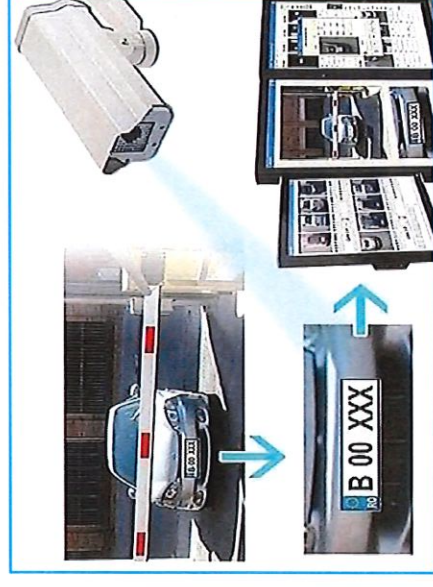
Downtown Dover Parking Management Plan



Off-Street Parking Management Options

2c. MSM with License Plate Recognition (LPR) Count System

LPR could count cars and control the “LOT FULL” sign. An LPR System can integrate with the MSM to allow counting of Permit and Hourly Customers independently.



Downtown Dover Parking Management Plan



Off-Street Parking Management Options

3. Full Parking Access and Revenue Control System (PARCS) including gates

A PARCS system would provide full control to efficiently manage the Parking Facility.



Downtown Dover Parking Management Plan



Off-Street Parking Management Options Matrix

Option	Description	Est. Cost	Pros	Cons
1	No Equipment, Park/Mobile only	\$0	<ul style="list-style-type: none"> Provides unrestricted access to Lot No additional investment 	<ul style="list-style-type: none"> Limited control Inefficient space utilization Negative customer experience - Full Lot Mobile Payment ONLY
2	MSM	\$7,500	<ul style="list-style-type: none"> Provides unrestricted access to Lot Accepts coin, credit & mobile pay Familiar payment system 	<ul style="list-style-type: none"> Limited control Inefficient space utilization Negative customer experience - Full Lot
2a	MSM with a manual sign	\$17,500	<ul style="list-style-type: none"> Provides unrestricted access to Lot Accepts coin, credit & mobile pay Familiar payment system Better customer experience – Full Lot 	<ul style="list-style-type: none"> Limited control Inefficient space utilization Sign won't prevent access to lot Manual sign change required
2b	MSM with a count system & sign	\$32,500	<ul style="list-style-type: none"> Provides unrestricted access to Lot Accepts coin, credit & mobile pay Familiar payment system Better customer experience – Full Lot Automatically activates "LOT FULL" sign 	<ul style="list-style-type: none"> Limited control Inefficient space utilization Sign won't prevent access to lot Loop counts unreliable
2c	MSM with an LPR count system & sign	\$57,500	<ul style="list-style-type: none"> Provides unrestricted access to Lot Accepts coin, credit & mobile pay Familiar payment system Better customer experience – Full Lot Automatically activates "LOT FULL" sign Efficient space utilization Detailed parking data captured 	<ul style="list-style-type: none"> Limited control Sign won't prevent access to Lot Significant investment
3	Full PARCS with gates	\$95,000	<ul style="list-style-type: none"> Accepts cash, credit & mobile pay Better customer experience – Full Lot Automatically activates "LOT FULL" sign Space for Permit and Hourly Customers Detailed parking data Easy & flexible validations 	<ul style="list-style-type: none"> Restricts access to Lot Significant investment

Downtown Dover Parking Management Plan



Off-Street Permit Parking Management

Colonial Parking will issue a vehicle credential that will be placed in the windshield of Permit Customer's vehicles.

Colonial enforcement staff will be able to scan the barcoded credential to confirm the credential is valid for parking at the DDP Off-Street Parking Facilities.



Downtown Dover Parking Management Plan



Hours of Operation

Monday – Friday 10:00AM until 6:00PM
Unattended Saturday, Sunday & Holidays

The Hours of Operation are designed to allow for parking without fee:

1. For deliveries to businesses in the morning (prior to 10:00AM),
2. For activities in the evenings, weekends & holidays,
3. For Downtown Residents who park in the evening and overnight.

Downtown Dover Parking Management Plan



Parking Fees

On-Street Parking

\$0.25 / 15-minutes
(\$1.00 / hour)
limit 2-hours

Off-Street Parking (Lots)

Transient (Daily)
Limited 1-Hour FREE
in designated spaces on
Governors Avenue Lot
\$1.00 / hour
\$5.00 Daily Max.
Contract (Monthly)
\$30.00/month

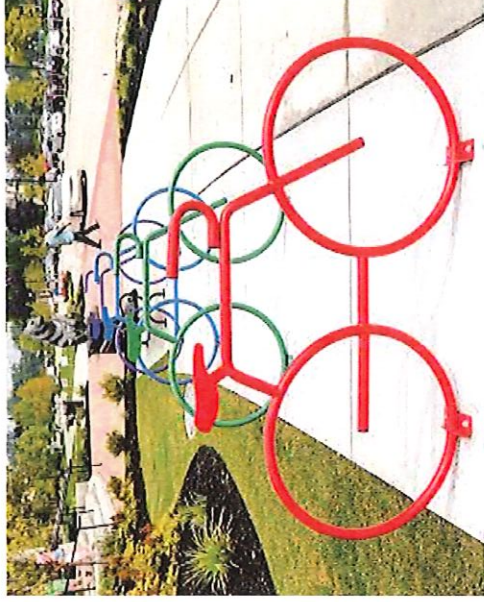
Downtown Dover Parking Management Plan



Parking Facility Amenities

Implement amenities in the Bradford Street Parking Lot now:

- Electric Vehicle (EV) Charging
- Bicycle racks



Downtown Dover Parking Management Plan



Return to Normal Parking Operations Tuesday, September 7, 2021

Off-Street Parking

- Parking fees will resume for the Bradford St. Lot, Governor's Ave. Lot and Lookerman Way Lot.
- Parking charges will be collected through the ParkMobile app in a pilot program.
- Daily parking fees - \$1.00 per hour up to \$5.00 for all-day.
- Enforcement of monthly permits and ParkMobile payments in the off-street lots will resume.



On-Street Parking

- The existing 2-hour limit will be enforced by the city.





Downtown Dover Parking Management Plan

Questions?



Downtown Dover Parking Management Plan

For additional information visit the
Downtown Dover Partnership
website at:

[https://www.DowntownDover
Partnership.com/ddp/parking-
downtown/](https://www.DowntownDoverPartnership.com/ddp/parking-downtown/)





OPEN HOUSE

- **Parking Survey Results Overview**

(Survey administered March 2021)

- **Excerpts of Parking Management Plan**

Comprehensive Downtown Dover Parking Solution

Wednesday, August 11

4:30—6:30 p.m.

Community Room of the Library

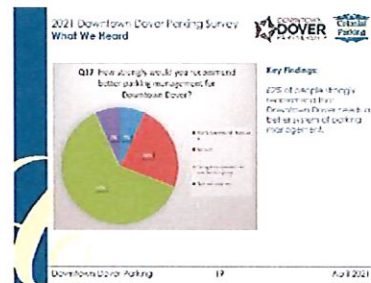
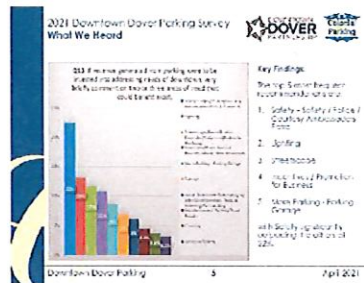
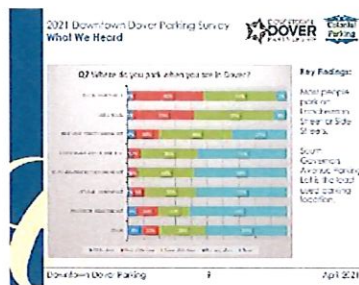
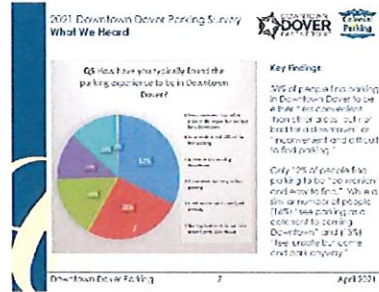
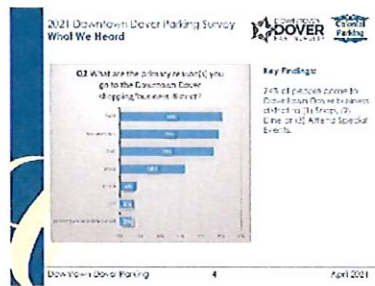
[Tinyurl.com/DoverParkingSolutions](https://tinyurl.com/DoverParkingSolutions)



Downtown Dover Parking Management Plan



The Downtown Dover Partnership (DDP) - Colonial Parking team launched a survey in March 2021 which asked about parking behaviors, parking conditions and ideas for future improvements to parking in Downtown Dover. This is a sample of some of the key survey results.



Conclusions: Based on "What We Heard" from the 2021 Downtown Dover Parking Survey we have determined the following:

- The Goal of the DDP Parking Committee is to make Downtown Dover a better place for visitors, and an environment for merchants, business owners, property owners and the downtown community to thrive.
- Downtown Dover has a limited number of parking spaces and even with modest activity due to the pandemic there appears to be a lack of parking.
- As activity returns and new investment is made in Downtown Dover parking will become even more scarce, making it important to manage these scarce resources.
- Develop a comprehensive Parking Management Plan with the goal of creating more efficient parking to implement when the recovery from the pandemic is more certain.
- Continue to engage the public in the development of the parking management plan.

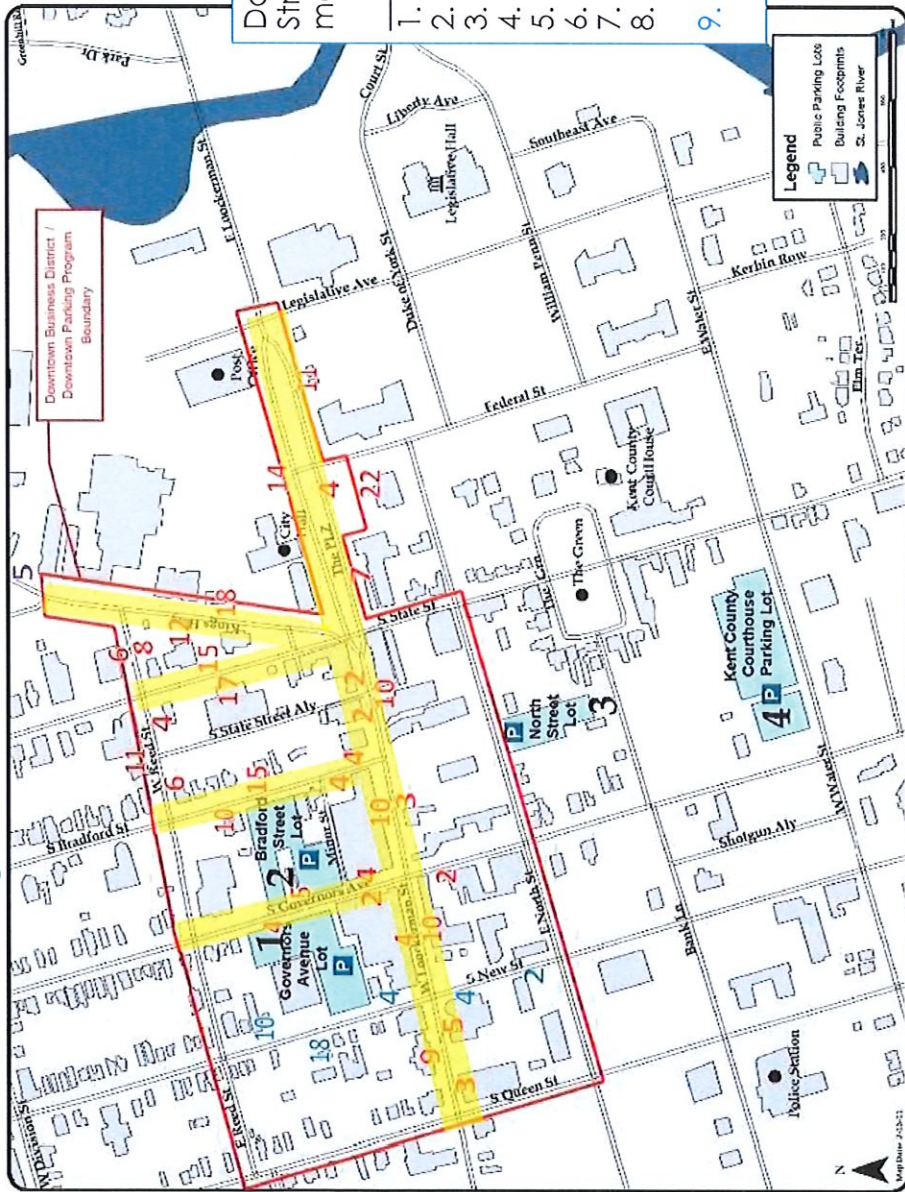
For additional information or to see the complete survey results visit the Downtown Dover Partnership website at:

<https://www.DowntownDoverPartnership.com/ddp/parking-downtown/>



Downtown Dover Parking Management Plan

On-Street Parking



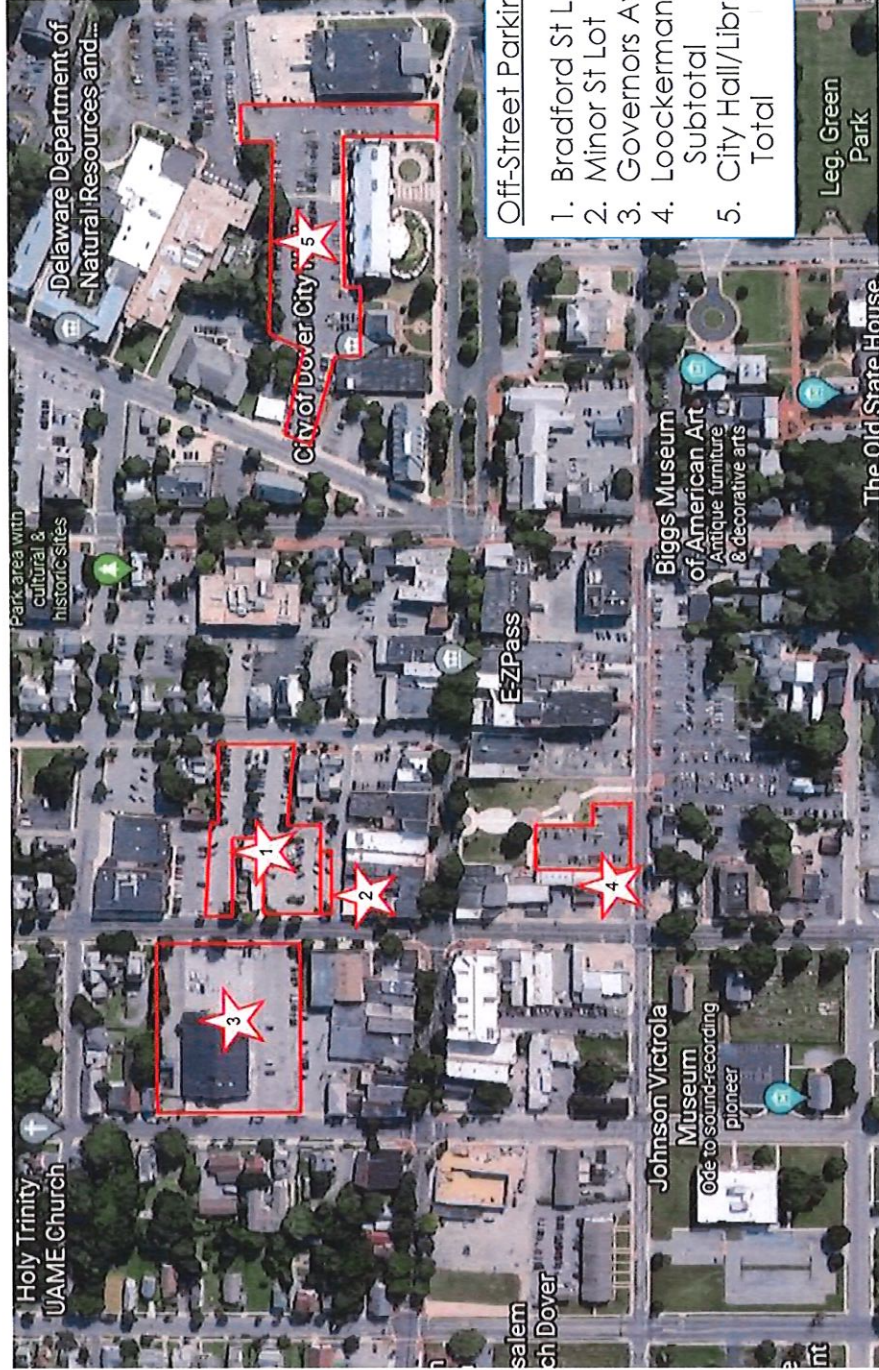
Downtown Business District On-Street Parking Inventory (noted on map in **RED**)

Block	# of spaces
1. Queen St	0
2. Governors Ave	17
3. Bradford St	33
4. State St	32
5. Kings Highway	30
6. Lookerman St	116
7. W Reed St	35
8. W North St	0
Subtotal	263
9. New St	38
Potential Total	301



Downtown Dover Parking Management Plan

Off-Street Parking



Off-Street Parking Spaces

1. Bradford St Lot	112-spaces
2. Minor St Lot	8-spaces
3. Governors Ave Lot	100-spaces
4. Lookerman Way Lot	35-spaces
Subtotal	255-spaces
5. City Hall/Library Lot	140-spaces
Total	395-spaces



Downtown Dover Parking Management Plan

Off-Street Parking Management Options Matrix

Option	Description	Est. Cost	Pros	Cons
1	No Equipment, ParkMobile only	\$0	<ul style="list-style-type: none"> Provides unrestricted access to Lot No additional investment 	<ul style="list-style-type: none"> Limited control Inefficient space utilization Negative customer experience - Full Lot Mobile Payment ONLY
2	MSM	\$7,500	<ul style="list-style-type: none"> Provides unrestricted access to Lot Accepts coin, credit & mobile pay Familiar payment system 	<ul style="list-style-type: none"> Limited control Inefficient space utilization Negative customer experience - Full Lot
2a	MSM with a manual sign	\$17,500	<ul style="list-style-type: none"> Provides unrestricted access to Lot Accepts coin, credit & mobile pay Familiar payment system Better customer experience – Full Lot 	<ul style="list-style-type: none"> Limited control Inefficient space utilization Sign won't prevent access to lot Manual sign change required
2b	MSM with a count system & sign	\$32,500	<ul style="list-style-type: none"> Provides unrestricted access to Lot Accepts coin, credit & mobile pay Familiar payment system Better customer experience – Full Lot Automatically activates "LOT FULL" sign 	<ul style="list-style-type: none"> Limited control Inefficient space utilization Sign won't prevent access to lot Loop counts unreliable
2c	MSM with an LPR count system & sign	\$57,500	<ul style="list-style-type: none"> Provides unrestricted access to Lot Accepts coin, credit & mobile pay Familiar payment system Better customer experience – Full Lot Automatically activates "LOT FULL" sign Efficient space utilization Detailed parking data captured 	<ul style="list-style-type: none"> Limited control Sign won't prevent access to Lot Significant investment
3	Full PARCS with gates	\$95,000	<ul style="list-style-type: none"> Accepts cash, credit & mobile pay Better customer experience – Full Lot Automatically activates "LOT FULL" sign Space for Permit and Hourly Customers Detailed parking data Easy & flexible validations 	<ul style="list-style-type: none"> Restricts access to Lot Significant investment



Downtown Dover Parking Management Plan

What is Important to you for Off-Street Parking Management?

Option	Description	Most Important	Moderate	Least Important
1	Unrestricted access to Lot			
2	Accepts coin, credit & mobile payments			
3	Familiar payment system			
4	Space availability notification to customers			
5	Maximizing the use of all spaces			
6	Easy and flexible parking validations for merchants			



Downtown Dover Parking Management Plan

What is Important to you for Investing Proceeds from the Downtown Dover Parking Management Program?

Option	Description	Most Important	Moderate	Least Important
1	Enhanced lighting			
2	Streetscapes			
3	More parking – a parking garage			
4	Safety – Safety, Police or Courtesy Ambassadors to patrol			
5	Improved signage			
6	Incentives to attract business / promotion of existing businesses			